

PRODUCT OVERVIEW

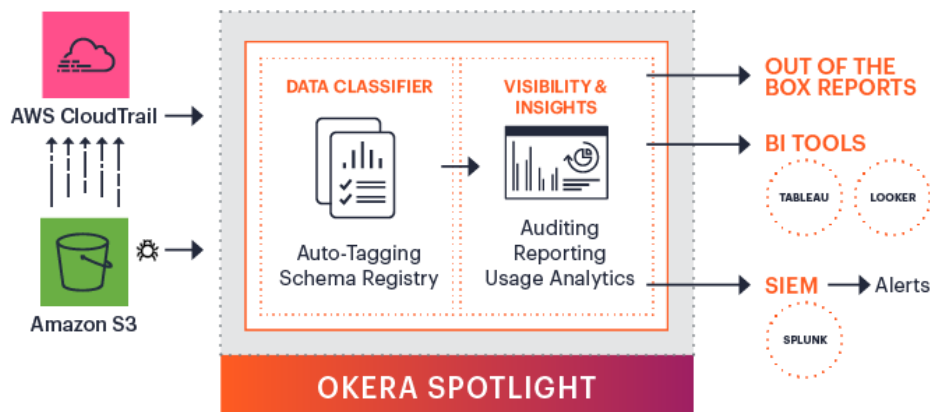
Okera Spotlight for Amazon Web Services (AWS)

Okera Spotlight solves one of the biggest challenges with managing an AWS data lake: getting visibility into usage and access patterns, especially for sensitive data, to assess risk from a governance and regulatory perspective. It can be deployed within an hour and immediately provides value through full visibility into data lake usage, access patterns, and classification of sensitive data. If you are ready to create and enforce policies for unified access control, you can easily upgrade to the Okera Active Data Access Platform.

Product Overview

Okera Spotlight includes two main features: Data Classifier and Visibility & Insights. The product is designed for zero-configuration and seamless integration with your data lake, regardless of analytics and machine learning tools used.

Okera Spotlight can be installed on a single Amazon EC2 instance and connects to AWS CloudTrail. It surfaces the location of sensitive data, along with its access and usage pattern, through an interactive dashboard. Data lake owners can use these reports for detailed and continuous visibility and gain immediate insight into their current regulatory exposure.



Key Benefits

AUDITING AND INSIGHTS INTO DATA LAKE

Capture audit logs for 100% of user activity from any tool. Data owners and stewards can understand their risk exposure by quickly finding out who has accessed sensitive data, how much they have accessed, and through which applications.

DETECT DATA BREACHES

Gain visibility into who is accessing sensitive data, when, how often and how much. With added integration with SIEM tools, data stewards and security professionals receive alerts on breaches before they occur.

ZERO CONFIGURATION

Can be installed on a single VM in your current infrastructure with a few clicks for immediate visibility into your sensitive data usage. Data consumers see no impact to their work, regardless of analytic tool.

DATA CLASSIFIER

Okera Spotlight crawls the data lake and builds upon data from CloudTrail in order to automatically discover schemas and apply rules to tag sensitive fields. The information highlighted includes schemas, tags, and annotations.

Auto-Classification

Data lake owners and stewards can classify data sets for better monitoring, auditing and reporting on sensitive data. Okera Spotlight applies tagging rules to automatically identify sensitive data (e.g. credit card numbers and email addresses). Users can also create their own tags according to whichever data elements they deem most important.

VISIBILITY & INSIGHTS

Okera Spotlight integrates with CloudTrail to get data access logs from Amazon S3, which cover all access regardless of what API or tool was used. It provides a more holistic view of data lake activity, which enables data stewards to answer important questions such as:

- What data is being accessed in the lake, especially sensitive data?
- Which users have accessed sensitive data?
- Which tools are accessing the sensitive data and how much did they read?

Out of the Box Reporting

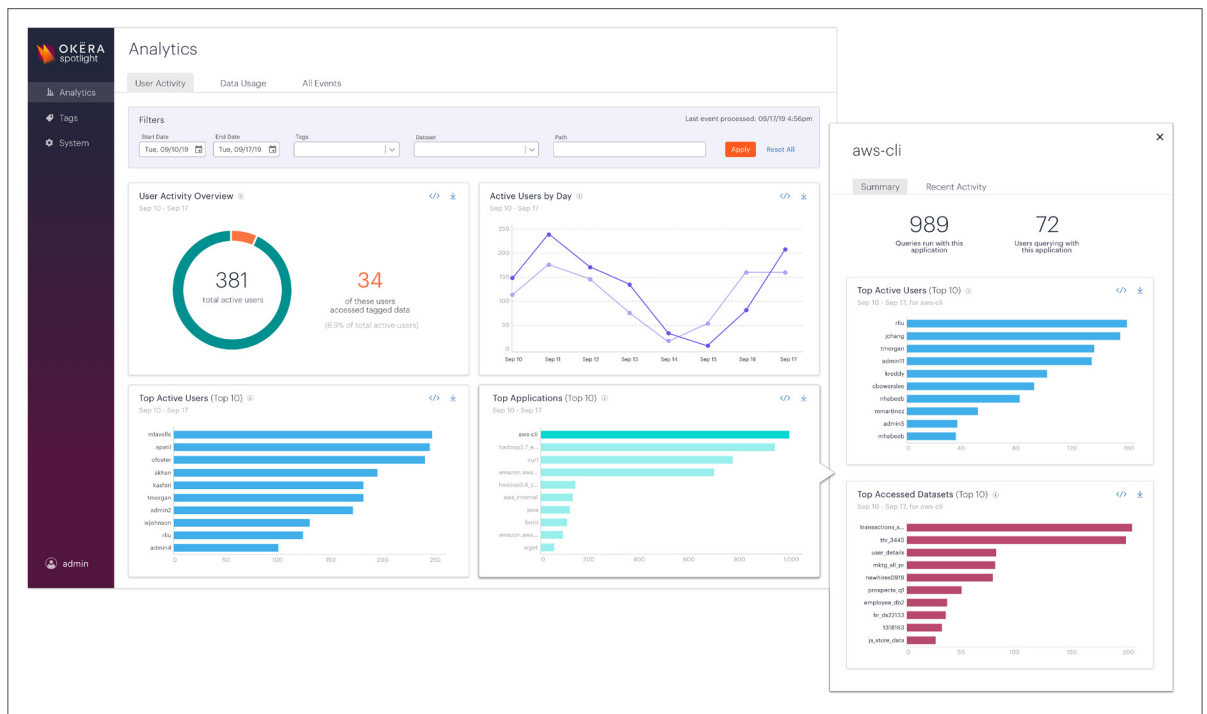
A number of reports are built into the Web UI to answer common access and usage questions. These reports can be filtered to only include specific data (e.g. only tagged data), or only data within a certain path.

Business Analytics Integration

All enriched audit activity can be queried and analyzed using any analytics tool. Okera Spotlight integrates with most BI tools through a JDBC interface, making it simple to build dashboards in popular tools such as Tableau and Looker.

SIEM Integration

The enriched audit can be integrated with SIEM and log management tools such as Splunk or Sumologic. Whether through a real-time dashboard or in conjunction with existing workflows, you can see anomalies in data access patterns and potentially detect security breaches before they occur.



ABOUT OKERA

Okera enables the management of data access and governance at scale for today's modern cloud data lakes. Built on the belief that companies can do more with their data, Okera's Active Data Access Platform (ODAP) enables scalable fine-grained data protection and visibility on data lakes for both structured and unstructured data. This allows agility and governance to co-exist, giving data consumers, owners, and stewards the confidence to unlock the power of their data for innovation and growth. ODAP can be implemented and deployed in less than a day, creating immediate value for enterprise organizations. Okera is headquartered in San Francisco and is backed by Bessemer Venture Partners, Felicis Ventures, and Capital One Growth Ventures.

Learn more at www.okera.com or contact us at info@okera.com.